



Mining



Oil & Gas



Civil Engineering & Infrastructure



Plant Engineering & Process Engineering

## The Professional Highly Integrated Seismic System

### SUMMIT X Stream Pro

### The 'Professional Highly Integrated Seismic System'!

The SUMMIT X Stream Pro is the best value quality all in one seismograph for engineering application. The robust 24 channel unit with embedded mobile computer and integrated high resolution screen can be used in any environment for high speed production. The seismograph is designed as stand-alone system without the need of additional equipment.

The SUMMIT X Stream Pro is ideal for any engineering surveys in almost any environment.

#### Specialised for Engineering surveys!

- Best value engineering seismograph
- Highest productivity
- For specialist applications such as LVL, MASW and engineering surveys
- Extremely robust, lightweight casing
- Supreme service via rapid reaction support hotline

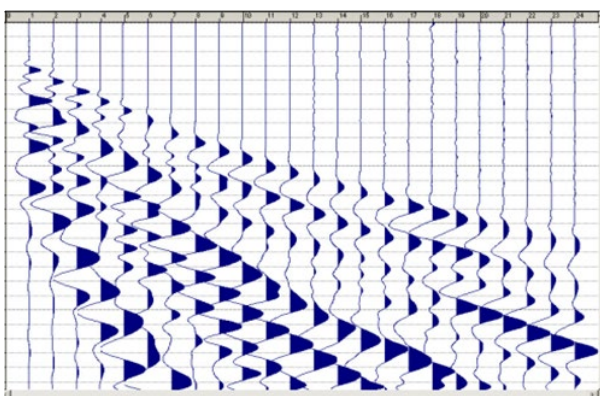
SUMMIT X Stream Pro 24 channel unit



Land streamer



Seismogram



## Technical Specifications

Sample Interval	1/48, 1/32, 1/16, 1/8, 1/4, 1/2, 1, 2, 4, 8 ms
Record Length	Up to 120,000 samples (single shot)
Preamp Gain	0 dB, 20 dB or 40 dB
A/D Converter	24 bit delta sigma technology
Maximum Input Signal	2.0 Volt RMS 5.6 Volt peak to peak
Input Impedance	20 kOhm
Instantaneous Dynamic Range	≥ 120 dB @ 2 ms sampling interval
Equivalent Input Noise	Less than 0.2 μV RMS @ 2 ms sampling interval and 40 dB preamp gain
Crosstalk Rejection	≥ 112 dB (between channels)
Total Harmonic Distortion	≤ 0.0008 %
Common Mode Rejection	≥ 100 dB
Gain Accuracy	Typical 1 % (between all channels)
Power Supply	+ 9 - 18 VDC
Dimensions	30 x 24.9.0 x 19.6 cm
Weight	5.9 kg

Digital Anti-Alias Filter	- 3 dB @ 0.8 x Nyquist
Rejection at Nyquist Frequencies	-120 dB
Passband Ripple	+/- 0.05 dB
Built-In Test Functions	- Sine wave - Pulse - Instrument noise - Geophone step
System Check	- Battery status - Equivalent input noise - Total harmonic distortion - Instantaneous dynamic range - Common mode rejection - Cross talk - Time accuracy
Geophone Check	- Impedance - Damping - Natural frequency - Noise
Auxiliary Channels	Channels can be programmed as AUX or DATA

Subject to technical changes

## Environmental Specifications

Humidity Range	0 – 95 %
Case	Solid waterproof housing deployable in any surface environment

## Overall System Performance and Flexibility

### Typical Shot Cycling Time

- selected recording length +1 second

### Mobile System Control

- Operating System: Windows XP

### Connectors

- 55 pin signal input connector
- 12 V DC Power-In (4-Pin)
- Trigger-Slope / Trigger Pulse In (BNC)
- USB 2.0

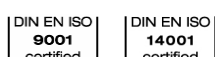
### DMT GmbH & Co. KG

Am Technologiepark 1  
45307 Essen, Germany

Tel +49 201 172-1441

Fax +49 201 172-1693

www.summit-system.de · info.summit@dm-t-group.com



TÜV NORD GROUP

Disposal information:  
Our products are subject to the WEEE directive. DMT has committed itself to take back all electrical and electronic components sold and to dispose of them professionally.  
Please contact: products@dm-t-group.com

WEEE Registration Number: DE 25917380

**Earth. Insight. Values.**